



Impacting the future. From day one.

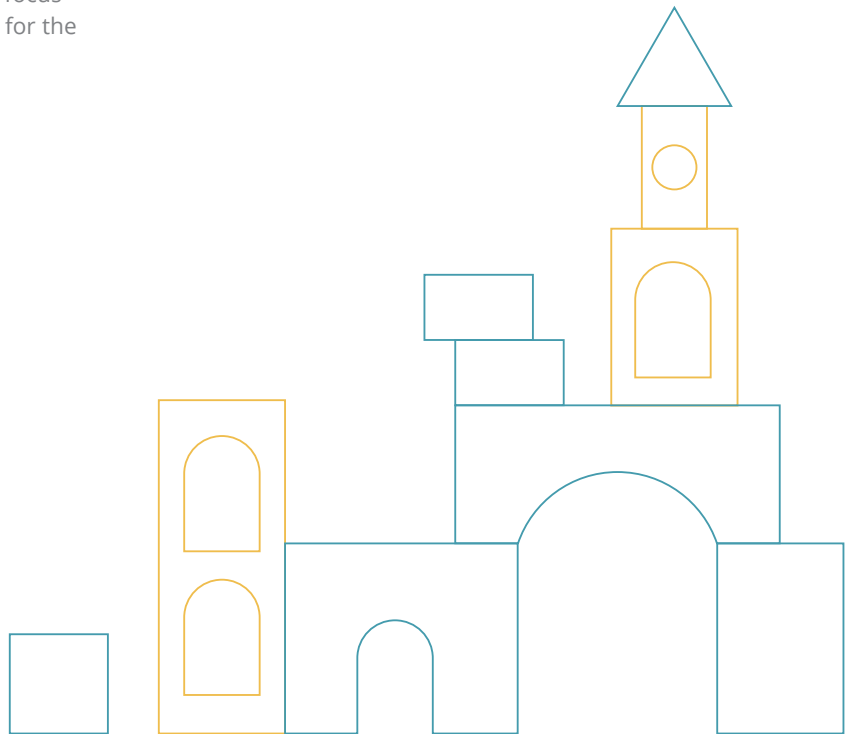
**WHEN LOUISVILLE CHILDREN
START ON THE RIGHT FOOT
THEY DON'T GET LEFT BEHIND.**

IMPACT REPORT



A WORTHY MISSION.

The Ready for K Alliance is a collaborative network of individuals and organizations committed to a seamless system of support for all children ages birth to kindergarten entry and their families, with a focus on improving outcomes and ending disparities for the most underserved children in our community.



HIT THE GROUND RUNNING ON THE PATH TO LIFELONG LEARNING.

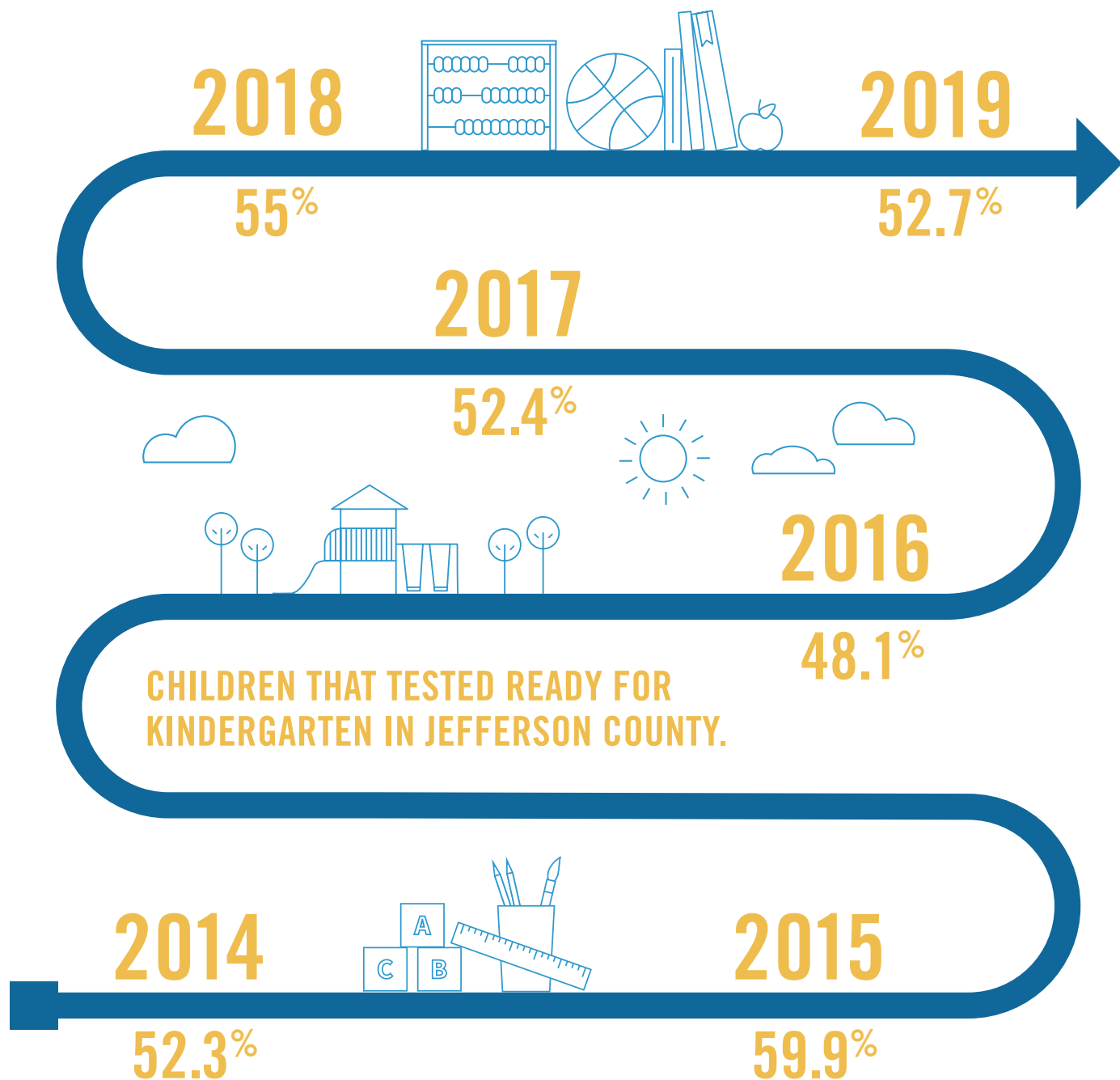
PARTNERSHIP

With over 100 community partners, the Ready for K Alliance is well positioned to make an impact by preparing the children in our community for success.

While the Ready for K Alliance strives to create a unified system in the birth to 5 space, it is the role of partner organizations to provide the knowledge and resources needed to make the system work. No one organization can move the needle themselves, but as a collective we can improve the outcomes for children in our community. And right now — more than ever — we need every individual and organization dedicated to helping children, parents, and caregivers access the tools they need to thrive. We need partners like you.

KINDERGARTEN READINESS

In 2014 the Ready for K Alliance set the goal of 77% of children ready for kindergarten by 2020 as measured by the Brigance screener. Progress towards this goal was made, but the goal was not met. The graphics to your right represent the percentages of children who scored Kindergarten ready in Jefferson County.



20+ YEARS OF MAKING AN IMPACT.

Organizational progress and accomplishments

■ Organization Progress ▲ Accomplishment

1999

- Success By 6 convened.

2006

- ▲ Kindergarten Countdown launched.

2009

- ▲ Ages and Stages Developmental Screening Hub launched.

2010

- The Greater Louisville Education Commitment signed, outlining a framework for education in Louisville.
- 55,000 Degrees launched.

2012

- ▲ Brigance Kindergarten Screening piloted throughout Kentucky.
- ▲ Louisville received an All-American City Award for its Campaign for Grade Level Reading plan.
- ▲ Excellence Academy Early Learning Centers piloted with 12 high-quality child care centers.

2013

- All Kentucky children screened by the Brigance at kindergarten entry; 52.3% scored “ready.”
- ▲ Excellence Academy Early Learning Centers (EAs) officially launched and branded with five child care centers committed to improving the quality of early child care through proven best practices.

2014

- Mayor Greg Fischer launched Louisville’s Cradle to Career Framework and asked Metro United Way to be the convener of the Early Care & Education/Kindergarten Readiness Pillar.
- First convening of the Early Care & Education/Kindergarten Readiness Pillar.
- Early Care & Education community level goal established: 77% of Children Ready for Kindergarten by 2020.
- Focus areas established for the Early Care & Education/Kindergarten Readiness Pillar — Access & Quality, Family & Caregiver Engagement and Transition to Kindergarten.
- Public convening of all Cradle to Career pillar leads.

2015

- Ready for K Alliance Action networks launched — Data, Access & Quality, Family & Caregiver Engagement and Transition to Kindergarten.
- The Early Care & Education Convening renamed the Ready for K Alliance.
- Ready for K Alliance branding and tagline developed: “Impacting the future from day one.”
- ▲ JCPS summer Ready for Kindergarten camps identified as best practice and expanded in the community.

2016

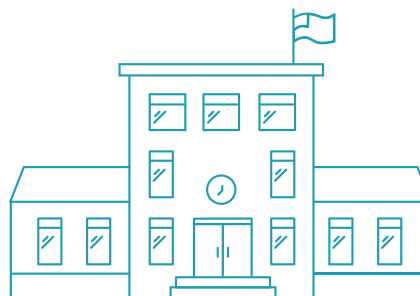
- Cradle to Career cabinet formed to align the education, social, emotional and health supports children need to thrive.
- Evaluation of the effectiveness of Ages and Stages Developmental Screening to identify best practices for expansion efforts.
- ▲ Louisville recognized as a Pacesetter City by The Campaign for Grade Level Reading.

2017

- ▲ Early Childhood Educators’ Communities of Practice professional development model piloted by MUW and 4-C and evaluated by the University of Louisville.

2018

- ▲ Louisville Access and Quality Study conducted to compare the geographic distribution of early care and education programs and the number of children likely to need those services.
- ▲ Louisville Access and Quality Study data utilized to develop an interactive mapping tool highlighting early care and education program access by neighborhood and trained community partners on how to use it.
- Cradle to Career and Louisville Promise efforts merge with the launch of Evolve502 and three early childhood benchmarks are added to the Evolve502 Pathway to Postsecondary Success.
- ▲ Say and Play with Words launched, a vocabulary initiative that encourages learning in everyday activities.
- ▲ Transition to Kindergarten initiative launched focused on easing the transition into school for children and families and on-time Kindergarten enrollment.



2019

- ▲ Partnered with the Prichard Committee and Division of Child Care on the Kellogg Family Childcare Home pilot to increase supply and quality of Spanish-speaking Certified Family Child Care Homes in Jefferson County.
- Community partners and consultants convened to coordinate and encourage local providers to submit Head Start and Early Head Start proposals.
- ▲ Community partners convened and developed the inaugural Ready for K Alliance policy agenda.
- ▲ Communities of Practice expanded in order to increase professional development for early childhood educators.
- ▲ Two new Head Start and Early Head Start grantees selected.

2020

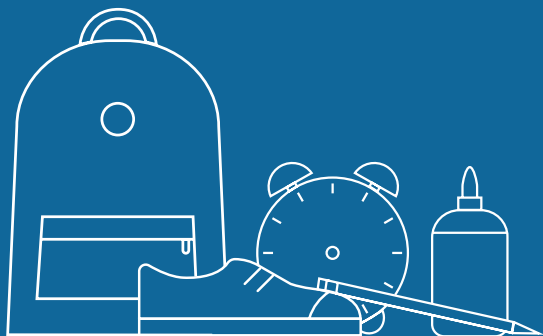
- The first five years of the Ready for K Alliance’s work assessed and development of a new model for future success.
- Ready for K Alliance Guiding Team expanded to increase diversity and inclusion of community leaders.
- Community partners surveyed to determine their commitment to the vision of the Ready for K Alliance.
- Evaluation of participating caregivers’ perception of the Ages and Stages Developmental Screening Hub to improve retention.

WHERE WE ARE NOW.

**As we move forward, we need to
understand where we are.**

We believe that if you can measure something, you can improve it. And our goal is to improve on the statistics to your right. Each is an important metric.

Jefferson County Community Metrics: *Source 2019 KY
Stats Jefferson County Profile Data



464

**All STARS
certified or licensed
child care facilities**

14%

**of the STARS rated centers
are high quality at either
a 4 or 5 star rating**

38,293

**capacity of ALL STARS
certified or licensed
child care**

29,743

children
0–2 years old

19,279

children
3–4 years old

19,149

children
5–6 years old



6,598

kindergarten
enrollment

20%

or 13,423 children
under 6 years old living
below 100% poverty.

30%

or 20,766 children
under 6 years old living
below 150% poverty.

40%

or 27,014 children
under 6 years old living
below 200% poverty.



15,199

children receiving WIC

Throughout KY only

53.4%

of women and
children eligible for WIC
actually participate



11%

preterm birth rate

898

families served
by First Steps



OUR VISION FOR THE FUTURE.

**All children enter
kindergarten ready
to thrive.**

To make this vision a reality, the Ready for K Alliance will focus on four outcome areas: Healthy Development, Access & Quality, Family and Caregiver Engagement and Systems Alignment.

HEALTHY DEVELOPMENT

Children are born healthy with access to resources to maintain healthy development.

Long-term goals:

- Reduce disparities in maternal health rates.
- Reduce disparities in birth outcomes for infants.
- Increase the number of children with access to a primary health provider.

FAMILY AND CAREGIVER ENGAGEMENT

Families and caregivers are equipped with knowledge and understanding of their child's development and involve themselves in helping them thrive.

Long-term goals:

- Increase family and caregiver engagement in their child's learning.
- Increase family and caregiver knowledge of developmental milestones.

ACCESS AND QUALITY

Families have access to affordable, high-quality early care and education.

Long-term goals:

- Families have resources to support their child's participation in high-quality early care and education.
- A variety of public and private high-quality programs are available that meet family and community needs.

SYSTEMS ALIGNMENT

Institutions, services, and agencies serving children are comprehensive, collaborative, aligned and coordinated.

Long-term goals:

- Health and development programs serving infants, toddlers and their families are coordinated, collaborative and aligned to provide consistent services.
- Private childcare, Head Start, Early Head Start and Public Pre-K providers work collaboratively to help families find the best early learning program for their child.
- School and community supports for families with young children are aligned and coordinated to leverage resources and meet the diverse needs of families.





JOIN US TODAY.

In order to improve outcomes for children in our community, we need your help to make our vision a reality. Contact us today at readyforkalliance.com/contact.





Metro United Way



readyforkalliance.com