



Metro
UNITED WAY



Metro United Way

IMPACT REPORT

2025

CONTENTS

- 2 Letter from the President & CEO
- 3 From Hardship to Hope
- 5 7 Ways We Work to Impact Our Community
- 7 Thriving Kids
- 11 Strong Households
- 15 Equitable Community
- 19 Volunteer Leadership
- 21 Corporate Partners
- 22 Workplace Campaigns, Foundation and Government Partners
- 23 Corporate Partner Engagement
- 25 Nonprofit and Community Partners
- 27 Individual Leadership Donors
- 31 Making Headlines, Making Impact
- 33 Moments That Moved Us

DEAR FRIENDS,

As I reflect on 2025, I am filled with deep gratitude for the compassion, commitment, and partnership that continue to define our community. Together, we have taken bold steps to move more families from hardship to hope.

When thousands of families in the Greater Louisville region faced uncertainty and delays in federal SNAP food support benefits, our Hardship to Hope Food Relief Fund quickly became a lifeline. Thanks to our donors, partners, and volunteers, we provided essential support to families across our 7-county region, ensuring that hope remained stronger than hardship.

This year also marked a moment of renewal for Metro United Way. Our brand refresh brought new energy to our work and reaffirmed our vision for a future where every child thrives, every household is strong, and every community is equitable – ensuring zip code doesn't determine destiny. And we were honored to be recognized nationally as America's Favorite Charity which is a reflection of the trust, generosity, and belief that so many have placed in us.

From local entrepreneurs to some of the Greater Louisville region's largest employers, from dedicated volunteers to lifelong supporters, our community continues to step up, united in purpose and action to ensure we all can be our best and do our best in the community that we call home.

Thank you for being part of this powerful movement for change. Together, we are building a stronger, more hopeful future for all. Here's to continued progress and partnership in 2026 and beyond. United is indeed the way!

All my best,



Adria Johnson
President & CEO
Metro United Way

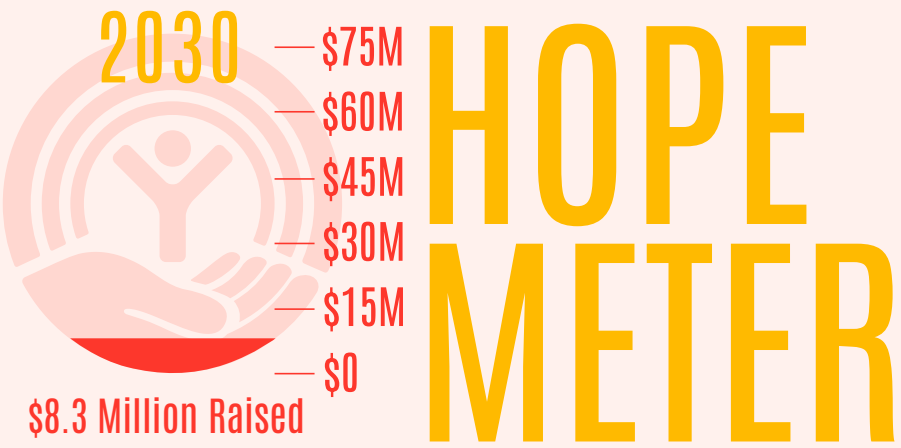


From **HARDSHIP** to **HOPE**.

...for Every Child, Every Family, Every Neighborhood.

We set an ambitious goal in 2025: raise **\$75 million by 2030** to change the trajectory of **260,000 lives across our region**.

Every dollar given helps a family find stability, a student succeed, and a neighborhood thrive. At the end of 2025, here's the progress made:



Serving these families has additional economic and social benefits for the Greater Louisville region, including reduced social costs associated with poverty, decreased reliance on public benefits and services, and increased local economic activity. This effort could have a nearly **\$776 million impact on our local economy** and **increase the number of individuals in the workforce by more than 15,500!**

HARDSHIP TO HOPE FOOD RELIEF FUND

\$607,500
in digital Kroger cards distributed by MUW in just eight days directly to families whose SNAP benefits were affected in November.

9,651
INDIVIDUALS

6,053
CHILDREN

515
SENIORS

“From Hardship to Hope’ means we are helping families who are drowning by throwing them a life preserver, helping them get to shore, and teaching them to become stronger swimmers. Aside from the fact it’s the human thing to do, we all benefit when everyone in our community thrives.”

– Jeremy Jarvi, Chief Development Officer



WHAT DOES HOPE LOOK LIKE?

- From eviction notice to welcome mat – **hope is homeownership.**
- From the floor to sweet dreams – **hope is a bed of their own.**
- From waitlists to workdays – **hope is a strong child care sector.**
- From closed doors to college dorms – **hope is access to higher education.**
- From no diploma to steady paycheck – **hope is meaningful employment.**
- From missed milestones to early support – **hope is catching concerns before they grow.**
- From survival mode to stability – **hope is financial coaching.**
- From feeling invisible to being heard – **hope is advocacy in action.**
- From isolation to connection – **hope is a community that shows up, where everybody belongs.**
- From being left behind to getting to class on time – **hope is knowing there’s a way to get to school.**
- From fear of saying the wrong thing to the courage to keep showing up – **hope is growth through equity.**
- From “I don’t know where to turn” to “I got the help I needed” – **hope is being connected.**
- From a temporary fix to lasting change – **hope is systems that work.**

HARDSHIP TO HOPE LEADERSHIP CABINET

Kimberly Halbauer, Chair Fifth Third Bank Kentucky	John Crockett III LG&E and KU	Stuart Osha Publix	Pattie Dale Tye Stoll Keenon Ogden
Jim Allen Baird	Condrad Daniels HJI Supply Chain Solutions	Logan Pichel Republic Bank	Tommy Wallace Old National Bank
Patrick Coty Yum! Brands	Jessica Klein Humana	Brad Seigel Caesars Southern Indiana	Jonathan Westbrook East & Westbrook Construction
Russell Cox Norton Healthcare	Lance Mann Dean Dorton	Angela Shaw Humana	Dr. Brian Yearwood JCPS



“Louisville is at a turning point. Metro United Way’s bold initiative, From Hardship to Hope, is designed to create meaningful, lasting change. I am calling on my fellow business leaders to step up to meet this challenge.”

– Kim Halbauer, 2025 Leadership Cabinet Chair

7 WAYS WE WORK TO IMPACT OUR COMMUNITY

Metro United Way works to ensure that the Greater Louisville region has thriving kids, strong households, and an equitable community. We are no longer just a community chest pass-through organization. We now work to positively affect and empower our community by removing barriers and shifting historical power structures to lead to transformative change. Here's how:

1

FUNDING & INVESTMENTS

Invest in more nonprofits today than ever before with a focus on solutions and solving community issues for transformational change.





VOLUNTEER ENGAGEMENT

Help organizations get connected to volunteers and also help volunteers use their skills and talent through year-round volunteer events and projects.

2

3

REFERRAL NETWORKS

Help connect individuals and organizations to resources in our community through a network of social services, health care, housing, and more.

14,053 individuals connected through 211 helpline





CONVENING & COLLECTIVE IMPACT

Create spaces to solve problems together that we couldn't do on our own as many community issues are too big for any organization to solve by themselves.

4

5

CAPACITY BUILDING

Offer opportunities, resources, and trainings for people to learn new skills that help enhance our partner organizations' ability to achieve their mission.





PILOTING INNOVATIVE PROGRAMS

Help create new types of programming that could address community issues in ways that haven't been done before, or have been proven elsewhere.

6

7

ADVOCACY & POLICY

We know that programming alone cannot fix what policy created so we developed a public policy team and agenda to help leverage more voices.



thriving kids

There’s nothing more important than ensuring our community’s children have what they need to thrive.

A child who thrives is happy, healthy, and has a strong sense of well-being. They feel secure and unconditionally loved, while also being heard, having hope for the future, and knowing they belong. They are allowed to explore, play, and dream big as they envision their own future and the future of our community.

But, children in our community face a range of challenges that impact their well-being, educational success, and ability to transition into adulthood. Metro United Way is working to address barriers and gaps in services and systems to unlock kids’ potential so they may thrive.

THE CHALLENGE

- Kentucky is **36th in the country** for **child well-being**.
- **21% of children** live in **poverty**.
- **63% of 3 and 4-year olds** are not in preschool.
- Indiana is ranked **25th in the country** for **child well-being**.
- **15% of children** live in **poverty**.
- **60% of 3 and 4-year olds** are not in preschool.

“With Metro United Way, we can advocate for policies that help children and families access child care.”

- Nonprofit Partner



“There is not one person, program, or organization who alone can address the challenges facing our community. This is why we must be aligned, work collaboratively, and unite across sectors to make progress and improve outcomes for our community. United is the only way we can ensure everyone has the opportunity to thrive.”

- Ashley Brandt, Director of Thriving Kids



OUR RESPONSE

- **Ready for K Alliance** – 100+ orgs and individuals working to ensure kids 0-5 have what they need to thrive.
- **Ages & Stages Developmental Screening (ASQ)** – equips families with resources, referrals, books, and activities.
- **Youth Success Network** – 200+ organizations prioritizing success in three sectors: school, home, community.
- **Young Men United** – creates pathways for young Black men to attend college and provides support until they graduate.
- **Little Free Libraries** – provides families free books in their neighborhood.
- **Build-A-Bed** – gives children bed frames, mattresses, sheets, blankets, pillows, and laundry bags.
- **Public Policy and Advocacy** – focuses on prenatal care, maternal health, affordable child care, and out-of-school time programming.



THE IMPACT

MORE THAN
\$340K

distributed to support projects focused on improving outcomes for children and families



819 CHILDREN
SCREENED

through our developmental screening hub that equips families with resources, provides referrals, and distributes books and activities (now available in four languages!)

175 BEDS
BUILT
BY 143 VOLUNTEERS

and given to students who did not have a bed to call their own



87%

positive outcome rates for youth participating in Youth Development programs

162

individuals completed our Ages & Stages Questionnaires training

218

youth-serving organizations in our Youth Success Network

100+

early care and education partners engaged in the Ready for K Alliance

OVER 500

youth development workers attended professional development workshops



WORK WITH
348

nonprofit and community partners in this pillar alone

169

family engagement kits distributed to parents of children age 0-5



MORE THAN
10,000

young people impacted

23,100

diapers collected and distributed

32,502 BOOKS
DISTRIBUTED

throughout our 40+ Little Free Libraries

31,075

impact kits created and distributed to 78 agencies

See more impact at metrounitedway.org/impact

THE STORIES...THE HOPE

Bridging the Digital Divide

About one-fifth of children in America don't have internet access. 43% of households with an income under \$30,000/year do not have high-speed internet.

Metro United Way and its nonprofit Youth Success Network partner, the Animus Foundation, are working to build a more equitable community by expanding access to technology and technology education.



Connecting to Resources in a Crisis

A pregnant mom was forced to leave her home due to unsafe living conditions but still had to pay rent. Our Ages & Stages team connected her with legal and medical advocates, as well as her child's insurance, housing case manager, and a home visitation program. Our team continues to monitor the situation and provide wraparound resources to ensure the well-being of both mother and child.

“The ASQ program at MUW has exceeded my expectations, offering a systematic approach to tracking my children's developmental milestones and identifying areas for improvement. The program's expert advice on addressing delays has enabled me to take a hands-on approach to supporting my children's development. I am sincerely thankful to participate in this outstanding initiative.”

- ASQ Parent



MORE STORIES



metrounitedway.org/stories

strong households

When families have what they need, they can break cycles of poverty and work toward a better tomorrow for future generations and our entire community.

Strong households have the primary resources needed to survive such as food, shelter, and care for mental and physical needs. They also have the ability to make choices and have hope for the future, envisioning possibilities for themselves and their community. Strong households are the foundation of a vibrant community and when they are strong, our entire community is strong.

But we know that for many families, achieving this vision begins with having enough money to cover basic necessities like housing, transportation, child care, food, and more. Metro United Way is working with a network of partners to address these issues.

“What inspires me most is helping families move from crisis to success. Through Strong Households, we connect households to both basic needs supports like housing, food, and transportation, and economic opportunities like financial coaching, homeownership, and entrepreneurship. By removing barriers and providing tools for success, we give families hope and empower them to build the lives they envision for themselves and their loved ones.”

- Josh Williams, Director of Strong Households

THE CHALLENGE

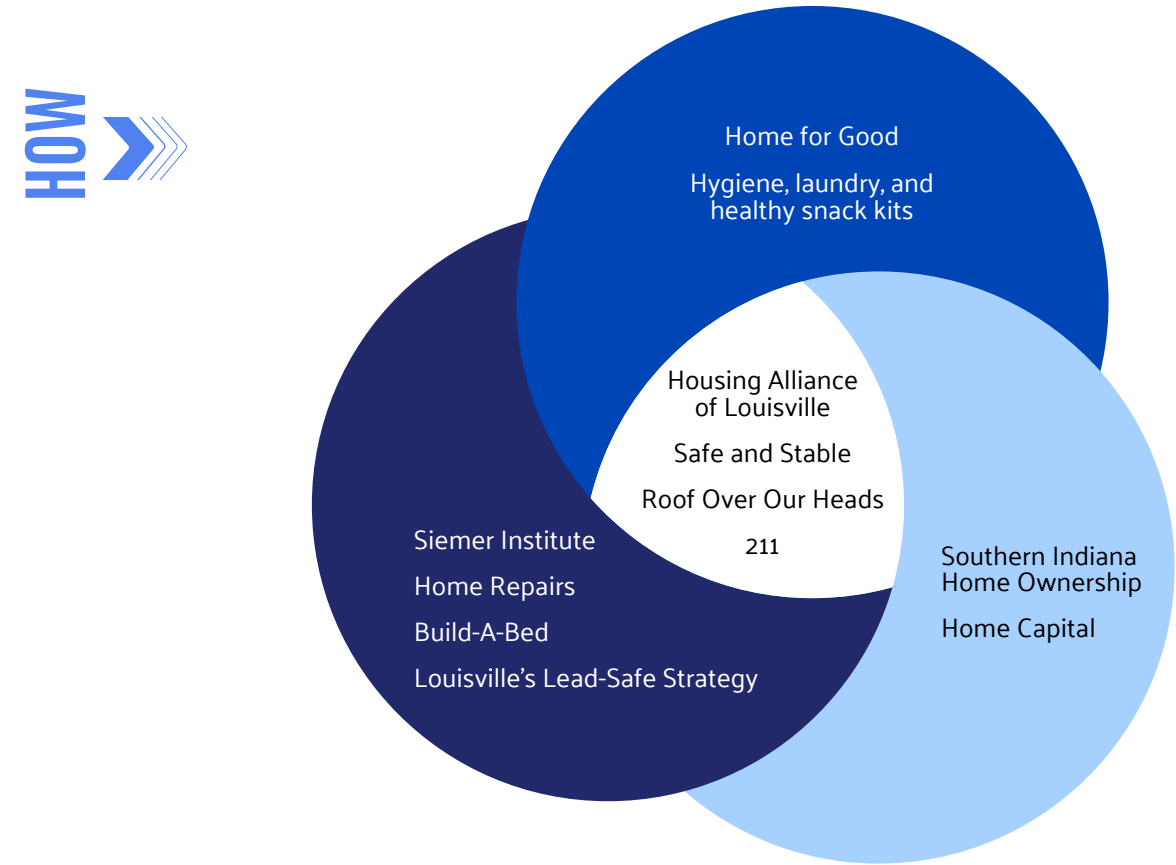
- **21% of individuals struggle** to afford the basics of housing, transportation, food, and child care.
- Nearly **4 in 10 don't have \$400** to cover a minor emergency without having to borrow or sell a possession.
- **55% increase in homelessness** since 2020.
- **49,000 households spend 50% or more** of income on housing, leaving very little for necessities/home repairs.
- **47,000 more affordable housing units** are needed so all our neighbors can access safe and stable housing.



OUR RESPONSE

Housing Solutions

	HOMELESS SERVICES	HOUSING STABILIZATION	AFFORDABLE HOUSING
GOAL	End street homelessness	Reduce evictions and invest in interventions that keep families housed	Safe and stable housing is available and affordable for neighbors across all income levels



Additional Programs and Initiatives

- Clinical Entrepreneurship Program
- Bank on Louisville
- Volunteer Income Tax Assistance (VITA)
- Workforce Financial Coaching
- FundBLACKFounders
- Generation Work
- United Community
- Public Policy and Advocacy

THE IMPACT

\$11.2M

secured via tax returns



Successfully advocated for

\$19.2M

in Louisville Metro Government resources invested in housing solutions in FY26 budget

175 BEDS BUILT

for kids that need them



11

helped with home repairs to stabilize their housing

WORK WITH

522

nonprofit organizations in this pillar alone



78

improved annual earnings and savings

172

helped to reduce debt

9 NEW INDIVIDUAL HOMEOWNERS

and another 6 have been preapproved for a mortgage loan



14,053

calls and connections made through our 211 helpline

10 MENTAL HEALTH CLINICIANS

trained to start private practice



101 HOMELESS STUDENTS

helped with transportation

386 FAMILIES HELPED

with housing stabilization

See more impact at metrounitedway.org/impact

THE STORIES...THE HOPE

“I was able to move into my new home and start fresh—no past balances—and I could buy food for my kids.”

- Single Mom

Safe and Stable: Housing for All

The Safe & Stable: Housing for All campaign brought more than 40 organizations in Louisville together to advocate for more local investment in housing solutions. These are some of their stories:



Helping Families Facing Financial Hardship with Affordable Housing

Metro United Way seeks to alleviate the outsized burden of housing costs through a homeownership pilot program serving families in Clark, Floyd, and Harrison counties in southern Indiana.

People in the pilot program receive financial coaching and wraparound supports for however long it takes for them to reach a level of stability where they can start looking to buy a home.



“Without Metro United Way, we couldn’t work intensively with individuals to help relieve their financial stress, increase their financial literacy, and meet their financial goals.”

- Nonprofit Partner



MORE STORIES



metrounitedway.org/stories

equitable community

We envision the Greater Louisville region as a place where zip code doesn't determine destiny and everyone has the opportunity to grow into their full potential.

An equitable community is one where every individual is valued and treated with fairness and justice. Residents understand the biases of racial, social, and economic systems and are empowered to participate in social, cultural, and economic life. It's where meeting needs and achieving one's full potential are not in any way predicated on identity, but the inherent right that every human has, allowing all to have barrier-free opportunities and experience the best possible outcomes: long lives, high quality of life, and safety.

But, despite our vision of an equitable Greater Louisville region, historical inequities, socioeconomic disparities, cultural and systemic barriers, and lack of awareness and engagement hinder progress toward ensuring equitable outcomes for all. Metro United Way is working to address these inequities and barriers with a network of partners in a variety of ways.

THE CHALLENGE

- The **poverty rate for African Americans in the Louisville area is 26%**, compared to 10% for white residents.
- Black households have a **median income that is 60%** of that of white households, and **Latinx households earn about 80%** of white household income.
- The average income of the top 20% of Louisville area residents is **15.7 times greater than the average income of the bottom 20%**, ranking Louisville 9th out of 17 among its peer cities for income inequality.
- The current life expectancy for Jefferson County residents is about 74.8 years, but drops to 70.7 for non-Hispanic Black residents. And life expectancy in west Louisville is 12 years shorter than that of east Louisville.



“We're shifting from charity to change. By investing in community leadership, challenging historical inequities, and using data alongside lived experience, we're addressing the roots, not just the symptoms, of poverty and exclusion.”

- Trent Findley, Director of Equitable Communities



OUR RESPONSE

- **United Neighborhoods** – transforms neighborhoods from the inside out with resident-driven priorities, strategies and solutions for investment, and understands that sustained neighborhood change requires listening to residents, authentic relationship-building, significant investment, and a long-term commitment.
- **Black L.O.V.E. (Live. Own. Vote. Excel.) Philanthropic Partnership** – utilizes strategic guidance and collective thought leadership of Black-run philanthropic partners to pool resources, break down barriers, and make transformational change.
- **FundBLACKFounders** – supports early-stage startups founded by Black entrepreneurs, helping them to bring their ideas to life and grow their businesses.
- **Racial Wealth Gap Simulations** – takes people and organizations on a historical journey to wealth building in America, pausing on 13 federal policies that most powerfully accelerated or impeded progress based on race.
- **Beyond Buzzwords** – a Metro United Way speaker series on diversity, equity, and inclusion that is designed to provide thoughtful and meaningful discussions about important topics that promote thinking as well as personal and institutional application.
- **Young Men United** – creates pathways for young Black men to attend college and provides support until they graduate.
- **Public Policy and Advocacy** – focuses on fair systems that remove systemic barriers.



FROM HARDSHIP

TO HOPE

THE IMPACT

Awarded
40 SCHOLARSHIPS
through Young Men United, supporting local high school students in pursuing higher education and leadership development.



Facilitated six Racial Wealth Gap Simulations, engaging more than
350 PARTICIPANTS
from businesses, nonprofits, and educational institutions. Participants reported over a 95%+ value rating, demonstrating the tool's ongoing impact in building awareness of systemic inequities.

Continued investment in
22 BLACK-LED ORGANIZATIONS
through the Black L.O.V.E. (Live. Own. Vote. Excel.) Philanthropic Partnership, advancing a culture of philanthropy rooted in generosity, justice, and shared accountability. These organizations continue to strengthen capacity, expand community reach, and drive systems-level change.

Expanded United Neighborhoods efforts in the California and Parkland neighborhoods in west Louisville as well as the Claysburg neighborhood of Jeffersonville, Indiana, deepening resident-led revitalization focused on health, safety, and economic stability with
\$450K IN NEIGHBORHOOD INVESTMENTS



Hosted three
BEYOND BUZZWORDS
speakers, sparking organization-wide conversations on equity, belonging, and the role of language and leadership in driving meaningful change.



Took
30 STUDENTS
on college tours to Historically Black Colleges and Universities (HBCUs), providing firsthand exposure to institutions that nurture academic excellence and cultural pride.

See more impact at metrounitedway.org/impact

THE STORIES...THE HOPE

“Without Metro United Way, we wouldn’t be able to provide the amount of support and resources that we provide.”
- Nonprofit Partner

College Prep, Life Lessons and Community Support

Mentorship. Scholarship. A safe space and a network of support. Metro United Way’s Young Men United program provides that to young men of color ages 16 to 24 to aid them in their educational journeys and help them navigate life’s challenges.

The program focuses on this population because they are the most underrepresented in higher education. And that’s not about ability or knowledge – it’s about a lack of community support.



WATCH: Meet scholars from the Young Men United program

Hear from the young scholars of the W.E.B. DuBois Academy about how the program helped shape their futures.



“Without Metro United Way, we would struggle to reach individuals in our most underserved neighborhoods who need these critical resources the most.”
- Nonprofit Partner



MORE STORIES



metrounitedway.org/stories

THANK YOU!

Because of you, lives are changing. Thank you for standing with us, believing in our mission, and helping make our community a place where everyone can thrive.

5,964
DONORS

7,124
VOLUNTEERS

253
CORPORATE
PARTNERS

1,000+
NONPROFIT
PARTNERS

36,748
INDIVIDUALS
IMPACTED



BOARD OF DIRECTORS

- Adria Johnson
Metro United Way

Tommy Wallace, Chair
Old National Louisville Region

Stephen Lukinovich, Vice Chair
Cherry Bekaert Clark County

Patricia Carver, Treasurer
Community Volunteer

Dr. Tracy Barber
Jefferson County Public Schools

Lonnie Bellar
LG&E and KU Energy LLC

Lynda Bolt-Jones
PNC Bank

Anya Bond-Beckley
Givaudan

Dr. Karen M. Cost
Norton Healthcare

Patrick Coty
Yum! Brands, Inc.

Douglass Craddock
University of Louisville

Ashley Duncan
Republic Bank

Nate Fowler
Frost Brown Todd

Matt Gibson
Kentucky Derby Festival

Ryan Harding
General Electric Appliances

Cassandra Gray
Creative Spirits Behavioral Health

Jerry Henderson
Forvis Mazars

Erin Herbert
Muhammad Ali Center

Bill Hollander
Community Volunteer

Larry Horn
Amplify Louisville

Kristel Jensen
Fifth Third Bank

Sarah Kelley
YPAL

Jennifer Nachreiner
Aetna Better Health of KY

Ashwin Netto
PwC

Tawanda Owsley
Hospatus Health

Judi Petty
Community Volunteer

Yolanda Pritchard
Brown Forman

Valecia Quinn
Jewish Family & Career Services

Angela Shaw
Humana

Maddie Shepard
Jefferson County Teachers Association

Dr. William Stout
Community Volunteer

Syd Whitlock
New Washington State Bank

Thank you to these Board members who completed their term in 2025: Sam Draut, Keith Hamilton, Crystal Peterson, and Kristen Williams.

COMMUNITY IMPACT CABINET

- Valecia Quinn, Chair
Jewish Family & Career Services

Anya Bond-Beckley
Givaudan Sense Colour

Ann Carruthers
Clark/Floyd Systems of CARE

Chrystal Hawkins
Chrystal Power Consulting

Alecia Kennedy
Humana Inc.

Tyler Radford
Louisville Urban League

Tiffany Reynolds
Bullitt County Public Schools

Mark Robson
Oldham County Public Schools

Megan Williams
Summit CPA

Thank you to these Community Impact Cabinet members who completed their term in 2025: Gabriel Jones and Vanessa Koenigsmark.



CORPORATE PARTNERS

Companies that fuel Metro United Way’s work to lift 260,000 individuals from hardship to hope by donating corporate dollars to lift our community.

\$100,000+



































\$50,000 - \$99,999





\$25,000 - \$49,999

Bowles Mattress Company

Bramco, Inc

Bricker Graydon Wyatt LLP

Caesars Southern Indiana

Cherry Bekaert

Costco

Enterprise Rent-A-Car

First Savings Bank

Kentucky Lottery Corporation

Kroger

Louisville Water Company

Messer Construction Co.

Michelin

Nationwide Insurance

PwC

Stock Yards Bank & Trust Company

Team Fishel

\$10,000 - \$24,999

ADP

Aetna Better Health of Kentucky

AT&T

Bellarmino University

Blueprint502

BrightSpring Health Services

Centra Credit Union

Central Bank

Constellation Energy

Dentons Bingham Greenebaum LLP

Eli Lilly and Company

Greater Clark County Schools

Gresham, Smith & Partners

Heaven Hill Distilleries, Inc.

Heritage Ford

Insulated Roofing Contractors

Jim Beam

Kyana Packaging Solutions

Martinrea

Meijer

Mercer, a Marsh Business

Metropolitan Sewer District

New Albany Floyd County Consolidated School Corporation

New Washington State Bank

Old National Bank

Oldham County Schools

PACCAR Parts

Park National Bank

Publix

Raymond James

Texas Roadhouse, Inc.

The Glenview Trust Company

Transamerica

US Bank

WesBanco

WLKY-TV 32

\$5,000 - \$9,999

AAA East Central

Amatrol, Inc.

Amcor

Anthem Blue Cross Blue Shield

Bridgehaven, Inc.

CoBank

Cummins

Dean Dorton

Everwise Credit Union

First Financial Bank

Global Payments

Harding, Shymanski and Company, PSC

Jefferson County Teachers Association

JOM Pharmaceutical Services, Inc.

Kennametal Inc.

Kentucky Farm Bureau Insurance

Kentucky Select Properties

MAC Construction & Excavating, Inc.

MCI

Opus Integration, Inc.

Park Community Credit Union

Shelby County Public Schools

Strand Associates, Inc.

The Dow Chemical Company

Voluforms

Vulcan

WORKPLACE CAMPAIGNS

Includes workplace campaigns over \$1,000.

ADP

Amatrol, Inc.

Amcor

American Commercial Barge Line LLC

Anthem Blue Cross Blue Shield

AT&T

Baird

Bank of America / Merrill Lynch

Bellarmino University

Bennett & Bennett Insurance Inc.

Black & Veatch

Blue River Services

Blueprint502

Bowles Mattress Company

Bramco, Inc

Bricker Graydon Wyatt LLP

Bridgehaven, Inc.

Brown-Forman Corporation

Business First

C & I Engineering, Inc.

Caesars Southern Indiana

Caterpillar Logistics

Centra Credit Union

Central Bank

Chemours

Cherry Bekaert

CoBank

Community Coordinated Child Care

Constellation Energy

Costco

Cummins

Dana Corporation

Dean Dorton

Deckel & Moneypenny, Inc.

Dentons Bingham Greenebaum LLP

Dinsmore & Shohl LLP

Duke Energy

Dynacraft, a PACCAR Company

Eli Lilly and Company

Enterprise Rent-A-Car

Everwise Credit Union

EY

Fastlane Marketing Group

FBT Gibbons LLP

Federal Reserve Bank of St. Louis

Fifth Third Bank

First Financial Bank

First Savings Bank

Ford Motor Company

Forvis Mazars

Fund for the Arts

GE Appliances

German American Bank

Givaudan Sense Colour

Global Payment Services

Grange Insurance Companies

Graphic Packaging International

Greater Clark County Schools

Greater Louisville Inc.

Gresham, Smith & Partners

Harding, Shymanski and Company, PSC

Heritage Ford

Housing Authority New Albany

Humana Inc.

Independence Bank of Kentucky

Indiana University Southeast

JBS

Jefferson Community & Technical College

Jefferson County Public Schools

Jefferson County Teachers Association

Jeffersonville Township Public Library

Jewish Family & Career Services

Jim Beam

Johnson Controls, Inc.

JOM Pharmaceutical Services, Inc.

Kennametal Inc.

Kentucky Association of Electric Co-Ops

Kentucky Farm Bureau Insurance

Kentucky Lottery Corporation

Kentucky Select Properties

Keystone Learning Academy

KPMG LLP

Kroger

Kyana Packaging Solutions

Leadership Louisville Center

LG&E and KU Energy LLC, a PPL Company

Lochmueller Group

Louisville Metro Government

Louisville Metro Housing Authority

Louisville Water Company

Luckett & Farley

Martinrea

MCI

Meijer

Mercer, a Marsh Business

Messer

Metro United Way Inc

Metropolitan Sewer District

Michelin

Nationwide Insurance Claims

New Albany Floyd County Consolidated School Corporation

New Washington State Bank

Norton Healthcare

OB/GYN Associates of Southern Indiana

Old National Bank

Oldham County Schools

O'Reilly Auto Parts

PACCAR Parts

Papa Johns International

Park National Bank

Personal Counseling Service, Inc.

PNC

Publix

PwC

Qk4

Raymond James

RBR Alliance

Republic Bank & Trust Company

Rockwell Automation

Roll Forming Corporation

ScionHealth

Semonin Realtors

Shelby County Public Schools

Spalding University

Stantec Consulting

Steel Dynamics

Stock Yards Bank & Trust Company

Stoll Keenon Ogden PLLC

Strand Associates, Inc.

Superb IPC

Sypris Solutions Inc.

Target

Team Fishel

The Dow Chemical Company

The Glenview Trust Company

Todd Asset Management LLC

Traditional Bank

Transamerica

Transit Authority of River City

Truist Financial Corporation

United Healthcare of Kentucky, Ltd.

University of Louisville

UPS

US Bank

Valero

Visually Impaired Preschool Services

Voluforms

Vulcan

Walgreens

WesBanco

WLKY-TV 32

Wolverine Worldwide

YUM! Brands, Inc.

FOUNDATION AND GOVERNMENT PARTNERS

Bank of America Foundation

Bonhomme Foundation

Brown-Forman Foundation

C. E. and S. Foundation

Caesars Foundation of Floyd County

Centers for Disease Control (CDC)

Delta Dental of Kentucky

Duke Energy Foundation

Early Learning Indiana

Ford Philanthropy

Ghiselin Foundation

Harford Mutual Insurance Group

Hazel & Walter T. Bales Foundation

Kentucky Governor's Office of Early Childhood

KIPDA (Kentuckiana Regional Planning and Development Agency)

Legacy Foundation of Kentuckiana

LG&E and KU Energy Foundation

Lift a Life Novak Family Foundation

Lilly Endowment Inc.

Limestone Family Foundation

Louisville Metro Government

May Wetherby Jones Foundation

McReynolds Foundation

Mr. William C. Almstedt Foundation

Nelson Outreach Growth Fund

PNC Foundation

Points of Light Foundation

Publix Super Markets Charities Foundation

Republic Bank Foundation

Siemer Institute

Snowy Owl Foundation

The Dunbar Foundation

The Gheens Foundation

The Herman H. Nettelroth Fund

The Humana Foundation, Inc.

The Klein Family Foundation

The Lancaster Family Fund

The Sam Schubert Foundation

The V. V. Cooke Foundation

Truist Foundation

Ulmer Family Foundation

UPS Foundation

US Bank Foundation

Yum! Brands Foundation, Inc.

21

CORPORATE PARTNER ENGAGEMENT

Companies also donate their time and talent to Metro United Way. Businesses are vital to building a strong community, and the most successful companies are those that align their workforce with purpose.

This past year:

6,700 VOLUNTEERS ^{from} 54 COMPANIES
created 107,089 IMPACT KITS that were distributed to
123 NONPROFITS in our community

“Volunteerism isn’t just nice, it’s necessary as many organizations couldn’t keep their doors open without them. We meet nonprofits wherever they are on their volunteer journey by providing support, resources, and training to strengthen their organization. This creates a powerful ripple effect: the nonprofit has more resources to meet community need, quality of life improves, and more people are empowered to be part of the solution.”

- Margaret Seifert, Director of Volunteer Engagement



“Metro United Way has mastered the art of making volunteering easy and fun!”
- Corporate Partner

“Every volunteer event hosted by Metro United Way is guaranteed to be well organized and designed for impact.”
- Corporate Partner



NONPROFIT AND COMMUNITY PARTNERS

We can't do this work alone. Today, Metro United Way works with more nonprofits in our region than ever before through a variety of ways to ensure we have thriving kids, strong households, and an equitable community.

2NOT1
300FOR300
A Hand Up Community Resource Center
Ace Project, Inc.
Adelante Hispanic Achievers, Inc.
Align Southern Indiana
American Red Cross
Americana Community Center
AMPED
AnyOneCanRead
Apprisen
Backside Learning Center
Bellarmine University
Bellewood and Brooklawn
Big Brother Big Sisters of Kentuckiana, Inc.
Black Birth Justice
Black Minds Matter Louisville, Inc.
Blue River Services, Inc.
Blueprint 502
Boy Scouts of America, Lincoln Heritage Council
Boys & Girls Clubs of Kentuckiana
Boys & Girls Clubs of Harrison - Crawford Counties
BrainStem
Bridge Kids International
Bridgehaven, Inc.
Bridging The Gap Learning Academy
Building Blocks
Bullitt County Public Schools
Buttafly Communications
CASA of The River Region
Catalyst Rescue Mission
Catholic Charities of Louisville
Center for Lay Ministries
Center for Neighborhoods
Center for Nonprofit Excellence
Central Louisville Community Ministries
Centro Latino of Shelbyville, Inc.
Change Today, Change Tomorrow
Charleston-Clark County Library
Child Care Aware
Children Have Options In Choosing Experiences (C.H.O.I.C.E., Inc., Louisville)
Children Shouldn't Hunger Choices
Chooeswell Communities
Clark County Youth Shelter and Family Services, Inc.
Coalition for the Homeless
Coalition Supporting Young Adults
Commonwealth Institute of Kentucky
Community Action of Southern Indiana (CASI)
Community Chest of Oldham County
Community Coordinated Child Care Council on Developmental Disabilities
Culzzles
Decode Project, Inc.

Delta Foundation
Dorman Preschool Center
Drive 4 Healthy Homes
Elevate Louisville
Evolve 502
Family and Children's Place
Family Ark
Family Health Centers of Southern Indiana
Family Health Centers - Portland
Family Scholar House
First Gethsemane Center for Family Development, Inc.
Floyd County Library
Fresh Anointing
Fund Black Founders
Girl Scouts of Kentuckiana
Global Game Changers Children's Education Initiative, Inc.
Goodwill Industries of Kentucky
Goodwill of Central and Southern Indiana, Inc.
Granny's Birth Initiative
Harrison County Community Services, Inc.
Hazel Joyce Wiley Career & Financial Literacy Institute
HHN2L, Inc.
Highland Park Community Development Corp
Hispanic Connections
Home of the Innocents, Inc.
Homeless Coalition of Southern Indiana
Hoosier Hills Pact
Hope Buss
Hope Health Clinic
Hope Southern Indiana
Horse Sensing
Imagination Library of Louisville
Indiana Association for the Education of Young Children (INAEYC)
Inside the Lines Training
Inspire1
Jacob's Well
JTown Academy
Jefferson County Extension Office
Jefferson County Public Schools
Jeffersonville Library
Jewish Community of Louisville, Inc.
Jewish Family & Career Services
Joshua Community Connectors
Just Between Teens
Kaylyn's House of Joy, Inc.
Keeping it Real
KentuckianaWorks
Kentucky Chess Ambassadors
Kentucky Refugee Ministries
Kentucky Youth Advocates, Inc.
La Casita
Lay Ministries
Legal Aid Society, Inc.
Leora Brown School
LHOME
Life Development Corporation

Lifeshan Maternity Home
Lifespan Resources
Lighthouse Promise, Inc.
Louisville Asset Building Coalition
Louisville Central Community Centers, Inc.
Louisville Metro Government
Louisville Metro Resilience and Community Services, Office of Financial Empowerment
Louisville Urban League, Inc.
Louisville Water Company
Louisville Youth Group
Lynnhurst Community Outreach
Mama to Mama
March of Dimes
Metropolitan Housing Coalition
Ministries United of South Central
Minority Health Project
Molo Village CDC
Muhammad Ali Museum and Education Center
National Center for Families Learning (NCFL)
Nativity Academy at St. Boniface
Neighborhood House, Inc.
New Albany Floyd County ED. Foundation
New Albany Salvation Army
New Century Fellowship
Christian Church
New Directions Housing Corporation
New Hope Services
Ohio Valley Educational Cooperative
Oldham County Education Foundation
Oldham County Health Department
Oldham County Public Library
Olive Tree Resources, Inc.
On My Way Pre-K
Operation Care, Inc.
Options Unlimited, Inc.
Our Place Drug & Alcohol Education Services, Inc.
Out Loud Louisville
Parenting with Purpose
Peace Education Program
People Against Trafficking Humans
Coalition of Kentucky (PATH)
Personal Counseling Service, Inc.
Pinwheel Group
Play Cousins Co-Op
Portland Promise Center
Power 2, Inc.
Prepping for K Academy
Prevent Child Abuse Kentucky
Prichard Committee for Academic Excellence
Project Community Center, Inc.
Prominent Youth of America
Providence Childcare and Preschool
Rauch, Inc.
REACT
River City Drum Corp Cultural Arts Institute
River Valley Resources

Robert Jamison Ministries
Roots 101 African American Museum
Russell: A Place of Promise
Safe Passage
Salt and Light Community Development Corporation
Seven County Services
Shelby County Public Schools
Shepherdsville First Church of the Nazarene
Shively Area Ministries
Sickle Cell Association of Kentuckiana
Skillz 4 Life
Smoketown Family Wellness Center
Society of St. Vincent De Paul Louisville
Somali Community of Louisville
South Louisville Community Ministries
Southwest Family Ministries
Sowing Seeds with Faith
St. George Scholar Institute
St. Joseph Children's Home
STEAM Exchange
Summer Bridge
Systems of Care
Talk Childcare To Me
Tech-Nique
The Arthur S. Kling Center
The Association of Community Ministries
The Better Together Collective
The Book Works
The Center for Women and Families
The Food Literacy Project
The Prophecy Foundation
The Salvation Army of Louisville
The Shelbyville Area NAACP Branch
The Wright Place Child Care
Thrive by 5
Tip It Forward
Tiger Strike Martial Arts
Tri-County Community Action Agency, Inc.
Turnaround Resource Center, Inc.
United Crescent Hill Ministries
United Way of Kentucky
University of Louisville
University of Louisville Foundation, Inc.
Volunteers of America Mid-States
Wesley House Community Services
West Louisville Community Ministries
West Louisville Math and Science Project
Worth the Words
YMCA of Greater Louisville, Inc.
YMCA of Greater Louisville - Floyd and Clark branches
YMCA of Harrison County
Young Author's Greenhouse
Young Nonprofit Foundation
Youth Link Southern Indiana

“Metro United Way is leading the way in finding new solutions to old problems through the transformative ways we work today. No longer do we operate primarily as a transactional community chest. Instead, we work more closely with more organizations in more ways than ever before. In addition to trying to solve for old problems already in existence, we are also working collaboratively with community partners to co-create systems and solutions proactively to build stronger communities for the future.”

- Robert Earl Gunn, Jr., Chief Equity and Impact Officer



In addition to these partners, we work with hundreds of organizations in the Ready for K Alliance, youth success network, and our 2-1-1 helpline, information, and referral service.

INDIVIDUAL LEADERSHIP DONORS

Thanks to these individuals who joined our efforts this year to lift 260,000 individuals from hardship to hope by 2030.

Million Dollar Roundtable
(\$1,000,000+ Cumulatively)

Cathy & Irv Bailey
Sarah Barker & Campbell Brown
Mr. & Mrs. Allen M. Bond
Nina Bonnie
Joan Cralle Day
Sandra Frazier
Mr. & Mrs. J. David Grissom
Mr. & Mrs. Frank Harshaw
Henry V. Heuser, Jr.
Charlene & Michael McCallister
Wendy & David Novak
Kathy & Kent Oyler
Stephen Reily Family Fund
Mr. & Mrs. Robert Rounsavall
Fran & Matt Thornton
The Klein Family Foundation
Turner Memorial Fund
Marianne & Jim Welch
Mary Gwen Wheeler & David Jones, Jr.

Jennifer Adrio Society
(\$100,000+)

Nina Bonnie
Sandra Frazier
Jerry & Christy Henderson
Henry V. Heuser, Jr.
Stephen Reily Family Fund
Marianne & Jim Welch

United Visionaries
(\$50,000 - \$99,999)

Brooke Brown Barzun & Matthew Barzun
Sarah Barker & Campbell Brown
Turner Memorial Fund

Allen Society
(\$25,000 - \$49,999)

Mrs. Owsley Brown II & Family
Joyce & Van Carlisle
Tonya & Jim Gravitt

Karen & Roger Hale
Emily & Mark Kirchdorfer
Mr. Carl F. Pollard
Lindy Street
Dace & King Stubbs
Dick Swope
The Jones Family
The Klein Family Foundation
The Schmiedeler Family Fund
Mary & Ted Nixon

Tocqueville Society
(\$10,000 - \$24,999)

Missy & Jim Allen
Lonnie & Jackie Bellar
Sharon & Phillip Bond
Robert Bosley
Opal & George Bowles
Carole & Rob Christian
Ann Cobb
Terrance Cole
Tami & Robert Conroy
Rachael & Emmett Cosgrove
Karen Cost & J.R. Curtain

Patrick Coty
Elaine & John Crockett
Leanne Cunningham
Elona Cooper DeGooyer
Marilu & Henry Eng
Judy & Henry Erk
Cynthia Fanning & Kirt Jacobs
Nathaniel Fowler
LuAnn & Tim Galbraith
Stephen C. Gault

Katharine & Christopher Gilbert
Bill Good
Elaine Gravatte
Kimberly Halbauer
Marcia & Chris Hermann
Michelle & Allen Hertzman
Barbara & James Hodge
Augusta & Gill Holland
Alice & Wade Houston

Mr. & Mrs. Daniel Jarboe
Mr. Thomas Jessee
Adria Johnson
Valle Jones
Maureen & Gary Kingry
Mark A. Kristy
Nana Lampton
The Lancaster Family Fund
Bill Leachman
Ann Leonard
Ron Marcum
Jenny & Charlie Marsh
Sara & John McCall
David McCalpin
Debra & Ronald Murphy
Gabriel Murray
The Limestone Family Foundation
Java & Barrett Nichols
Edie H. Nixon
Jessica & Josh O'Bryan
Kathy & Kent Oyler
Deana & Mike Paradis
Akure & Charles Paradis
Dianna & Peter Pepe
Judith Nell Petty
Paula Pottinger, PhD & Scott Pottinger
Bonnie & Sam Rechter
Michael Russell
Martin F. Schmidt & Kate Schmidt Moninger Fund
Maria & Chuck Schram
Sam Schubert Foundation
Kelly Schulz
David Sinclair
Stephanie Hawkins Smith
Natalie Snyder
Nancy & Art Sponsler
Mary Stites
Jean & Bill Stout
Pamela F. & Paul W. Thompson

Terry & Joe Tolan
Amy & Steve Trager
Pattie Dale Tye
Vicky & John Voyles
Alicia & Peter Waldrab
Chris Whelan & Russ Richardson
Donald Whitfield
Debbie & Lawson Whiting
Jennifer & James Williams
Amanda & Jeffrey Wood
Anna & Corey Workman

Community Champions
(\$5,000 - \$9,999)

Lea Anderson
Anne-Britton Arnett & Robert Ransdell
Edie Bingham
Anne & Morton Boyd
Steffanie & Garvin Brown
Paul Chrisco
Dawn & George Gans
Kaleb Glenn
Mary Ann & John Gregory
Mary & Bill Hancock
Kristel Jensen
Robert Knadler
Stephen Lukinovich
Andrew Means
John E. Megibben
Angela & Tim Nall
Kelli & Steve Nelson
Diane Nguyen
Scott Niemeyer
Shelia Owens
Laura Padgett
Dixie & Logan Pichel
Philip Ransdell
Andrew Simon
Louise Slaven
Mr. Granville Brad Smith
Dr. Don A. Stevens
Josh Stubblefield

Mary C. Sullivan
Leslie & David Tate
Kim Tharp-Barrie
Ryan Toms
Louise R. Wall
Tommy Wallace
Robert Wessel
Audra & Daryl Williams

Leadership Donors
(\$1,000 - \$4,999)

Marc Abrams
Susan Acree
Angela Akridge
Brittney Alberhasky
Gregory Albright
Donald Allen
Johnny Alse
Christina Ames
Todd Anderson
Uzoma Anele
Lora Aria
Jason Armao
Scott Armstrong
Robert Arnold
Jane Arnold
Stephanie Baker
Joseph Baker
Melissa & Chris Balmer
Robert Banks
Jennifer Barber
Amanda Barley
Chad Barras
Lenfield Basham
Theresa Batliner
Kathy Beach
Michael Beattie
Charles Belle
Gabrielle Benfield
Christopher Bennett
Mark Berger
Matthew Berrian
Bruce Betts

Nancy Bierbaum
Diane Biery
M. Bisig
Antonio Boadas
Christopher Bobay
Deneen Bogdon
Lynda Bolt-Jones
Anya Bond-Beckley
Donna Bone
Christen Boone
Thomas Bornhauser
H. Bornstein
Lisa & Chris Bottorff
Robert Bowen
Ashley Brandt
Maureen Brekka
Michael Brennan
Elizabeth Brown
Tyrone Brown
Sue & Hewett Brown
Tia Brown
Erin Bruker
Douglas Burgess
Scott Burkhardt
Kyle Burns

Allen Bush
Lamarka Byrd
Gabriel Byrne
Jeffrey Callen
Tiffany Calvert
Chona Camomot
Todd Campbell
Richard Campbell
Timothy Campisano
Priscilla Capes
Ryan Carley
Richard Carrick
Terrence Carter
Patricia Carver
Rebecca Cash
Christopher Caswell
Cynthia Caudill
Adam Cialkoszewski
Cynthia Cialkoszewski
Alex Clark

Melanie Clark
Caroline Clark
Troy Clark
Carolle Clay
Ruth Cloudman
Peggy & J. Terrence Cody
Patrick Cody
Shane Cody
Prince Colley
Maria Conklin
Robert Cordy
Donald Corson
Kalia Cospy
Michelle & Paul Costel
Beverly Cote
David Coultas
Patrick Coulter
Edith Courtenay &

Gouverneur H. Nixon
Michael Cowherd
Kathy & Russ Cox
Parker Cox
Douglas Craddock
John Craddock
Bonnie B. Cress
Dana Crutcher
Andrea Cull
Philip Culver
Peter Cummins
Michelle Cunningham
Amy Curry
Brandon Cutlip
S. Dabney
Patrick Daily
Griffin Dampier

Brent A. Dellacoletta
Christopher Dempsey
James Dimas
Karen Donahue
Susan Donovan
Nicole Dorion
Matt Dougherty
Philip Dowdle
Meredith Downey
Sam Draut
James Glen Dreher
Joanie Duckworth
Anthony Duncan
Ashley Duncan
Brandon Eason
Mary & James Eaves
Arloa Eckels
Richard Eder



INDIVIDUAL LEADERSHIP DONORS

Luke Elliott	Chris Graven	Robert Hume
Amanda England	Laurie Gray	Sophie Hummer
Joanna Erny	Lynette Green	Karen Hunt
Sally Erny	Kim & Greg Greenwood	Kathi & Herb Hurst
Curtis Eskew	Glenn Grigsby	Mark Hussung
Christian Evans	Ricky Grundy	Melissa Iglehart
Erik Evans	Michael Guenthner	Charles Isaac
Mark Evans	Sandy Gulick	Kay Jacobs
Angie Evans	Robert Gunn	Carol James
Todd Fannin	Melissa Gunter	Michael Janok
John Fendig	Karla Hagan	Matthew Jarboe
Douglas Feuerhelm	James Halaris	Jeremy Jarvi
Michael Fine	Adam Hall	Sharon Jasper
Alex Gerassimides & Greg Fischer	Lori Hammond	Pamela Jaynes
Dennis Fisher	Hannah Hardy	Mr. Franklin K. Jelsma
Lori Forbes	Miles Harrison	Jason Jenkins
Leslie Fowler	Alice Hartley	Daron Johnson
Roger Foy	Mary Harville	Rontrel Johnson
Edith Frakes	Joseph Hawkins	Karen Johnson
Kristin Frakes	Hunter Hayes	Marya Johnson
Scott Frederickson	Jeannine & John Hayes	Sarah Johnson
Preston Freeland	George Hayes	Jason Jones
Mrs. & Mr. Ted R. Frith	Christopher Hayes	Colleen Jones
Gary Fuchs	Whitney Heflin	Amy Jordan
Kevin Fuqua	Claudia Hendricks	Suzanne Kaiser
John Gardner	Casey Hensley	Christopher Keil
Christopher Garrett	Erin Herbert	Lisa Keener & Bill Hollander
Margaret Garrison	Mr. Mike Hesketh	Richard Kelley
Martin Gerrety	Theresa Hettinger	Elliott Kelly
Ms. Shelisa Geutreaux & Mr. Joseph French	John Hill	Donald Kelly
Lyn Ghiselin	Marc Hindorff	Henry Kelsey
James Giesel	Christine & Thomas Hirsch	Steven Kerrick
Celia & Gary Gilpin	Willis Hobson	Kerry Ketchem
Rolanda Glass	Aaron Hollar	Mark Ketterer
Rory Goffner	Philip Holz knecht	Joseph King
Linda & Stuart Goldberg	Jill Horn	Janice Kingsolver
David Goldstein	Larry Horn	Craig Kinslow
Jerome Gordon	William Howard	Mark Kircher
Colby Graham	Susan Howard	Jeff Knott
	Anna Huang	Laura Koch

Tiffany Koller	Diane Miranda
Eric Kopp	Chester Misbach
Joseph Kraig	Michael Moll
Aaron Lamb	Juan Montano
Jacob Lancaster	Alexander Moore
Joseph Larocca	Terence Morris
Kimberly Lasley	Linda Morton
Mark Leach	Anne & Duane Murner
Portia Leatherman	Melody Murphy
Byron Leet	Debbie M. & Larry W. Myers
Michael Leland	Justin Myers
Justin Lemonds	Shane Neal
Suanna Leslie	James Nelson
Kelly Lewis	Ashwin Netto
Rebecca Lieber	Paul Neumann
Richard Lindop	John Nevitt
Joseph Link	Damon Newton
Joshua Lord	Sibusiso Ngubeni
Ricky Lovekamp	Martha Nichols
Meredith Loveless	James Nichols
John Lovett	Jenny Nixon
Aaron Lowe	Alex Novak
Daniel Lowe	Scott A. Olinger
Fairleigh Lussky	Judith Olliges
Mary Lyons	Kimberly A. Osborne
Laurel Mallory	Dexter Osha
Sallie & Ed Manassah	Miriam S. Ostroff
Lance Mann	Tawanda Owsley
Steve Marks	Sue & Martin Padgett
Pamela Martin	Stewart Page
Janie Martin	Alan Parsons
Robert Martin	Andre Patterson
Paul Martins	Penny Pearson
Mary & Charlie Mattingly	Kimberly & Paul Perkins
Richard Mauldin	Jason Perry
Jacqueline Mayfield	Crystal Peterson
Jennifer McClinton	Jean Pfisterer
Michael McDonald	Robert Phillips
Patrick McGinnis	Brian Phillips
Robert McIntosh	Niels Piepgrass
George McMinn	Ruth Pierce
Liz McQuillen	Vincent Poma
Susan Means	Anthony Powell
Christopher Meriwether	Samuel Price
Graham Merryweather	Donald Price
Jonathan Miller	Rolf Provan

Christopher Purvis	P. Norris Shockley	Sandra & Scott Trager
Rebecca Ragland	William Shofner	Andrew Trager-Kusman
Peter Ramsey	Laura Simcox	Steven Turner
Gregory Randel	Matt Simons	Cheryl VanAllen
Elizabeth Rapp	Wesley Simpson	Anne Veno
Erin Rasinen	James Smith	Danielle Vereen Stobbs
David Raymond	Mark Sneve	Matthew Verkuilen
Matt Raymond	Eugene Snowden	John Vidal
Jeff Rechter	Dulce Solorio	Jill & Dave Vogel
Kimberly Reed	Richard Spayd	Christopher Waford
Cindy Reichert	Rachel Spence	Wendy Wagoner
Edward Rhawn	Zachary Springer	Michael Waiz
Anna Richey	Kim Stawski	Andrew Walker
Thomas Rieth	Darryl Steffey	Dennis Walsh
Janet & Richard Rink	Elizabeth Steiner	Matthias Ward
John Rippy	William Steinmetz	Kevin Wardell
John Rittichier	Janice Stephens	Suzanne Warner
Carlos Rivas	Susie & Michael Stewart	Jay Warren
Malcolm Robertson	Mark Stilwell	Travis Waters
Lance Rodenfels	Patricia Stilwell	Norman Waters
Raymond Roederer	John Stites	Teresa Watson
Vicki Romanko	Alice & Walker Stites	Lucille Weaver
Greg Roshkowski	Darlene Stoddard	Leisja Webb
Jacqueline Rosky	Clarence Stokes	Gary Weidenborner
Mary Rotella	Thomas Stoltz	Sharon Weinert
Antoria Ruff	John A. Stough, Jr.	Claudia & Kendrick Wells
Talley Russell	Jennifer Stoutt	Michelle Wells & Scott Neff
Joseph Ryan	Andrea Strange	Michelle & Mark Wheeler
Thomas Saelinger	Paul Stratman	Sheryl Whitcombe
Tim Sanders	Elizabeth & Louis Straub	Geoff White
Clara Sanders	Donna & Jim Straus	David White
John Sands	Michele Stubblefield	Craig White
Sarah Santee	Allyson Sturgeon	Henry Whitener
Angela Sauer	Hannah Sturgeon	Victoria Wiford
Gregory Scales	Danielle Sullivan	Cory Williams
Michael Schellenberger	William Summers	Christopher Winger
Carin Schetler	Jerry Swartz	Mary Wolf
Mr. Warren Schimpff	Richard Swope	Richard Woods
Claudia Schindler	John Szymusiak	Christopher Woosley
Craig Schmitt	Cody Tarrence	Donna Wooten
Tara Schmitt	Phyllis & John Tate	Garnett Wortham
Anthony Schoen	Jesse Taylor	Tabatha Wright
Margaret Seifert	John Taylor	Michael Yates
Barbara Sexton Smith	Ramkumar Thilakaramanujam	Mellissa Yeagle
Deborah Shannon	Christopher Thompson	Jillian Young
Ellen & Max Shapira	Stephanie Tingle	Marc Young
Maddie Shepard	Jenna Tobbe	Todd Ziegler
George Sherrard	Judith Todd	Erin Zuber
John Shields	Yano Touma	
Scarlett Shine	Michael Toussant	



“I see Metro United Way’s mission come to life when we take what we’re hearing from families and partner organizations and turn it into action – making sure the policies shaping our community actually reflect the realities people face every day. Our policy work isn’t about politics; it’s about creating lasting change so every child and family has the chance to thrive.”

- Liz McQuillen, Chief of Public Policy

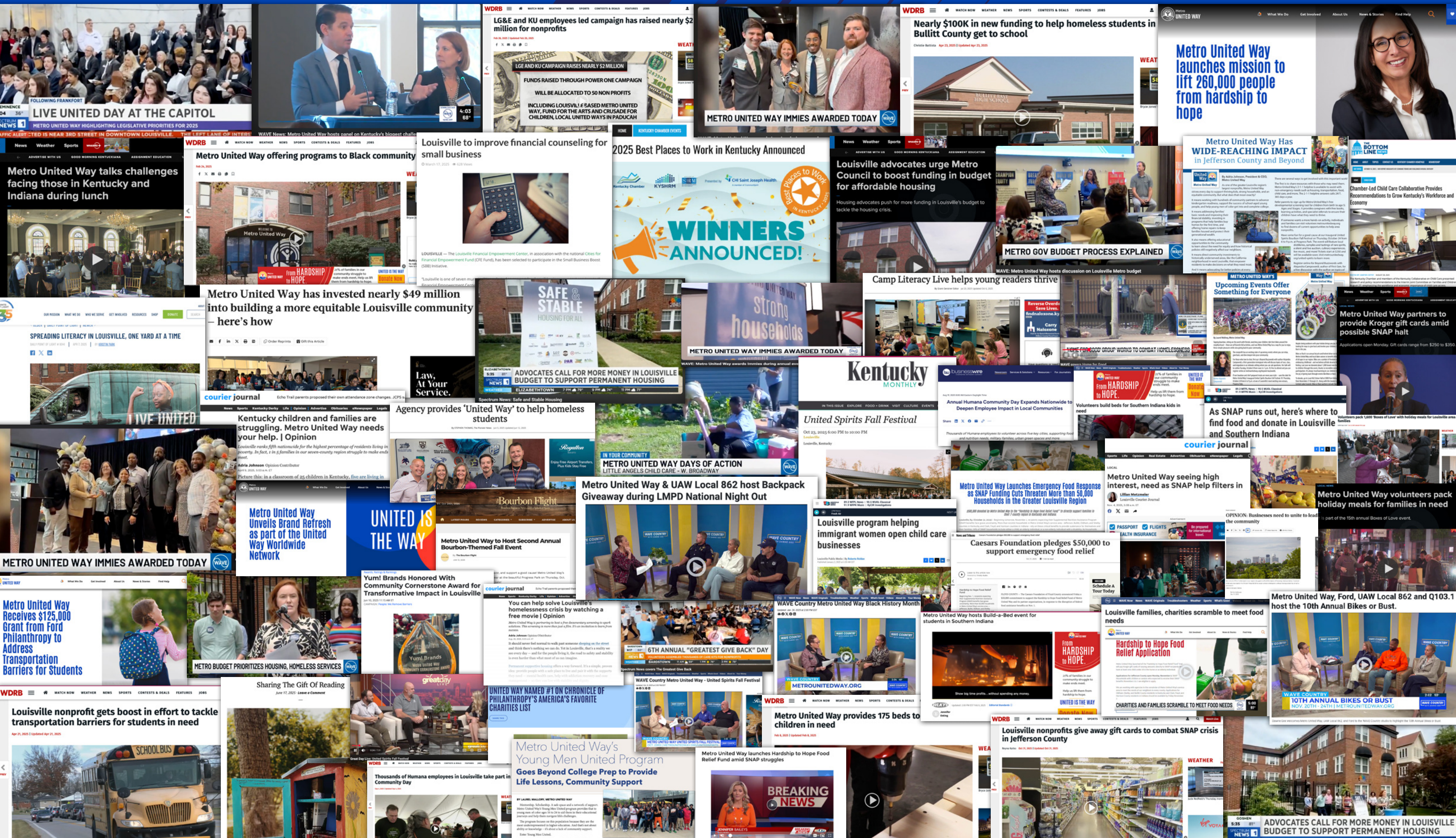


To join Metro United Way as an individual donor, visit metrounitedway.org/give or scan the QR code to the left.

This list does not include those donors who wish to remain anonymous.

MAKING HEADLINES

MAKING IMPACT



MOMENTS THAT MOVED US

From powerful gatherings to heartfelt connections, these events remind us why our work matters, and how much we can accomplish when we're united for our community.

Congratulations to our 2025 Community Impact "Immies" Award Winners!

Sullivan Service Award: Dr. William Stout

Metro United Way Lifetime Achievement Award: Kathy & Kent Oyler

Community Cornerstone Award: YUM! Brands

Game Changer Award: Centro Latino

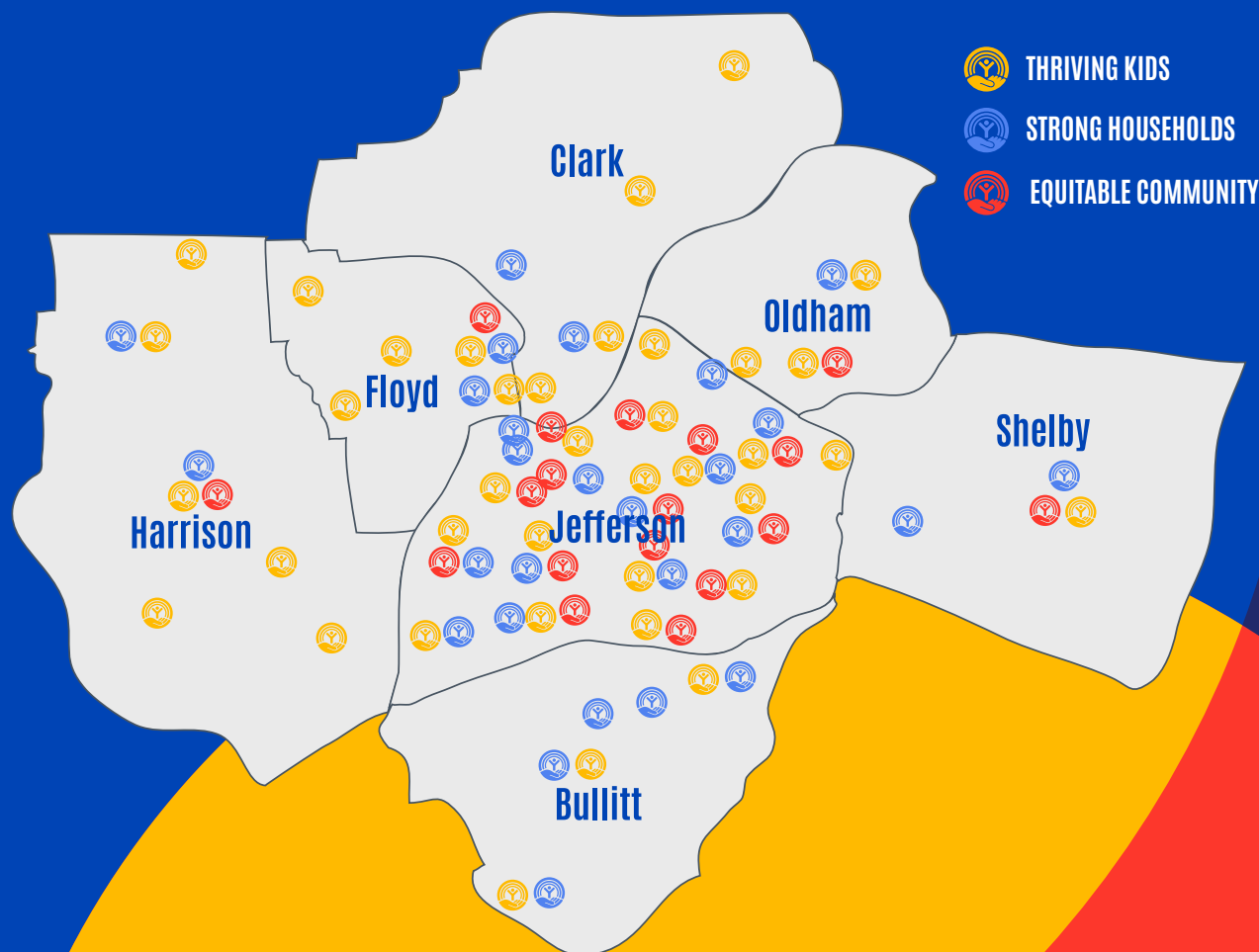
Changing the Narrative Award: Blueprint 502

Using Your Voice Award: Coalition for the Homeless



OUR IMPACT

Metro United Way works to ensure that the Greater Louisville region has thriving kids, strong households, and an equitable community. Take a look at where this work is happening across the seven counties that we serve.



Metro
UNITED WAY

